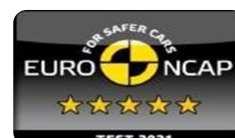


# THE ALL NEW QASHQAI MILD HYBRID



SCAN ME FOR BROCHURE



Jan-24

Engine	Performance	Consumption-Emissions	Weight & Dimensions	
Eng. Capacity: 1332cc	Top Speed: 205 km/h	Urban: 6.4l/100km	Boot Capacity: 504L	Length: 4,425mm
Power: 158 bhp	Acceleration: 9.5 sec	Ex.Urban: 4.9l/100km	with Folded Seats:1,593L	Width: 1,835mm
Torque: 270Nm 1800-3750rpm		Combined: 5.5l/100km	Kerb Weight 1315 Kg	Height: 1,625mm
		CO2: 125-140 g/km		Wheelbase: 2,665mm

## ACENTA- COMFORT package

€ 29,900

LED Headlamps (Low/High Beams)	ALIVI NAVI 12.3" with 6-speakers	Auto Headlights with High beam assist
LED Day Time Running Lights	Apple Carplay, Android Auto	Traffic sign recognition
LED Rear lamp (brake & night time)	Intelligent Cruise Control	Steering with paddle shift
Around View Monitor with Moving Object Detection	7" colour TFT Combimeter	Rain sensing wipers
Drive modes	i-Key (Engine start button & easy access)	Rear Automatic Braking
17" Alloy wheels	2 Curtain airbags + 2 Side Airbag (FR) + 2 FR airbags + 1 FR far side airbag	Intelligent Front Emergency Braking with Pedestrian, Cyclist & Junction assist
Hill start assist & auto hold	Bluetooth (phone and audio)	Dual auto air conditioning
Tire Pressure Monitoring System	Elect. Adjust, Fold and Heated outside mirrors	Vehicle Dynamic Controls
Rear Cross Traffic Alert	Smooth leather steering wheel & shift knob	Fog Lights
Rear parking sensors	Anti-Theft alarm	Blind Spot
Electronic parking Brake	Driver Attention Alert	Intelligent Forward Collision Warning
Shark fin Antenna	60/40 rear seats, Isofix	

## N-CONNECTA- DYNAMIC package (on top of COMFORT)

€ 31,900

18" Alloy wheels	Glass Roof and Roof Rails	Rear bumper with silver insert
Privacy glass	Wireless charger	Digital Speedometer Display
Front parking sensors	A/C rear vents louvers	2-piece luggage board

## TEKNA- PREMIUM package (on top of DYNAMIC)

€ 34,900

LED Adaptive Driving Beam	Ambient lighting: front doors & centre console	Power tailgate with hands-free function
Front & Rear LED turning signals	Dark Part Syntech Leather & Cloth for seats	Rear reverse light LED
Head Up Display	Driver seat: 8-way electric with slide/recline/lifter/tilt	2-way electric Lumbar

## TEKNA+ - LUXURY package (on top of PREMIUM)

€ 35,900

Nappa Quilted Leather seats	Adv.i-Key memory : driver seat & exterior mirrors	Tilting mirrors reverse
Heated front seats	Driver seat: +4-way electric lumbar	BOSE sound system 10 speakers
Heated steering wheel	Assist seat: Electric seat + 4-way electric lumbar	Front massage seats (3 massage modes)

Metallic Paint €600

2 tone color (except Comfort) €500

Prices and Equipment subject to change without notice, (\* 3 years or 100.000km on all parts and additional 4 years or 150.000km for engine and gearbox)

NICOSIA: 66 Kampou Str. 2030, Tel: 77777220 - 22418418

LIMASSOL: 19 Theophanous Kritos Str. 4152, Tel: 22418630

LARNACA: 17 Eleftherias Av., Aradippou, 7102, Tel: 22418600

PAPHOS: 67 Mesogis 8280, Tel: 2258656